



Ministry of Health and Social Services
Republic of Namibia

| NAMIBIA COVID-19 SITUATION REPORT NO. 55 | | | |
|--|-------------------|--------------------------|---------------|
| Outbreak Name | COVID-19 | Country affected | Namibia |
| Date & Time of report | 12.05.2020 19:00 | Investigation start date | 13 March 2020 |
| Prepared by | Surveillance Team | | |

Date of outbreak declaration in Namibia: 14 March 2020.

1. SITUATION UPDATE / HIGHLIGHTS

- No new confirmed case was reported in the last 38 days (5 April – 12 May 2020).
- Cumulatively, 16 confirmed cases have been reported in the country, to date.
- Of the 16 confirmed cases, eleven (11) have recovered
- Supervised quarantine for all people arriving from abroad, for 14 days is ongoing.
- Stage 1 of the state of emergency ended on 4 May 2020, and stage 2 is ongoing from 5 May until 2 June 2020;
 - Wearing a mask in public is mandatory
 - All borders will remain closed except for essential/critical services and humanitarian support to the response.
 - All other prevention measures are applicable to the entire country

2. BACKGROUND

Description of the cases

- **Index cases:** Two confirmed cases of COVID-19 were reported in Windhoek district on 13 March 2020. The married couple; a 35-year-old male and a 25-year-old female, arrived from Madrid, Spain on 11 March 2020.
- Total number of imported cases currently stands at 13 while 3 cases are local transmissions.
- There is no evidence of community transmission in the country at the moment.

Table 1: Confirmed cases by region as of 12 May 2020

| Reporting region | Total Cases | New cases | Active cases | Recovered | Death |
|------------------|-------------|-----------|--------------|-----------|----------|
| Khomas | 11 | 0 | 2 | 9 | 0 |
| //Karas | 1 | 0 | 1 | 0 | 0 |
| Erongo | 4 | 0 | 2 | 2 | 0 |
| Total | 16 | 0 | 5 | 11 | 0 |

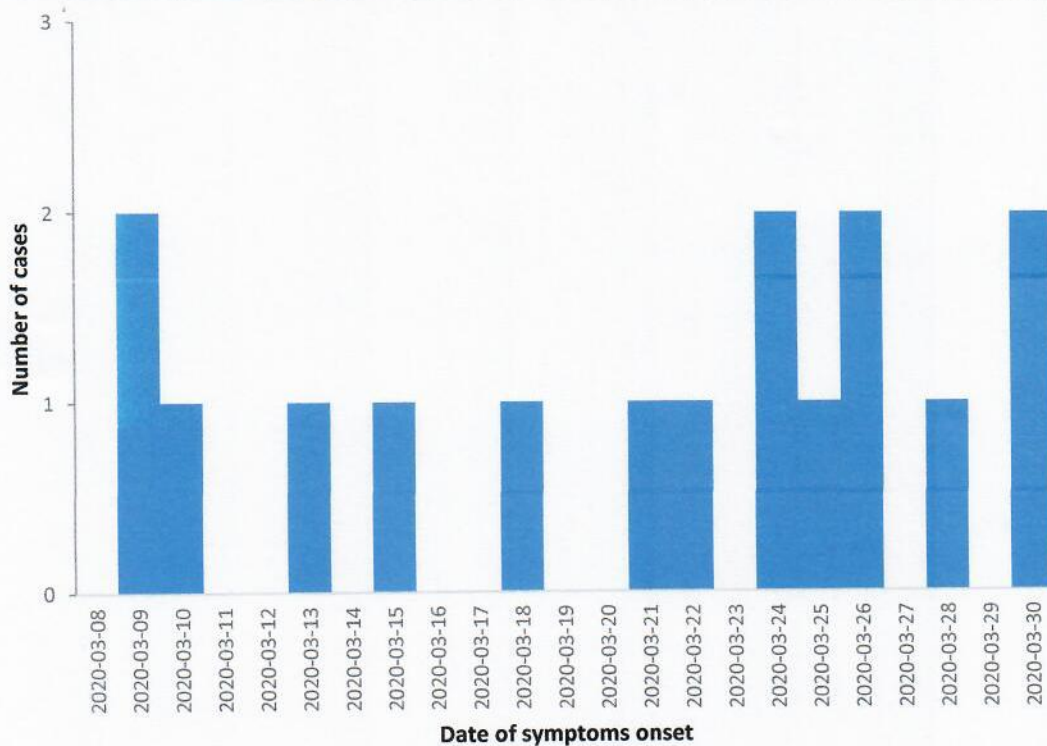


Figure 1: Epi-curve for COVID-19 confirmed cases in Namibia as of 12 May 2020

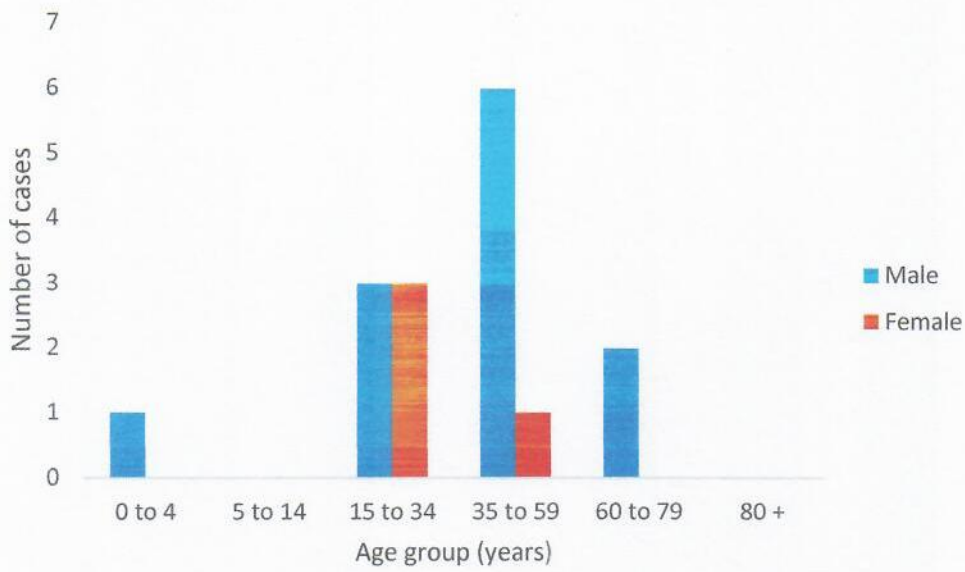


Figure 2: Age and sex distribution for COVID-19 confirmed cases in Namibia as of 12.05.2020

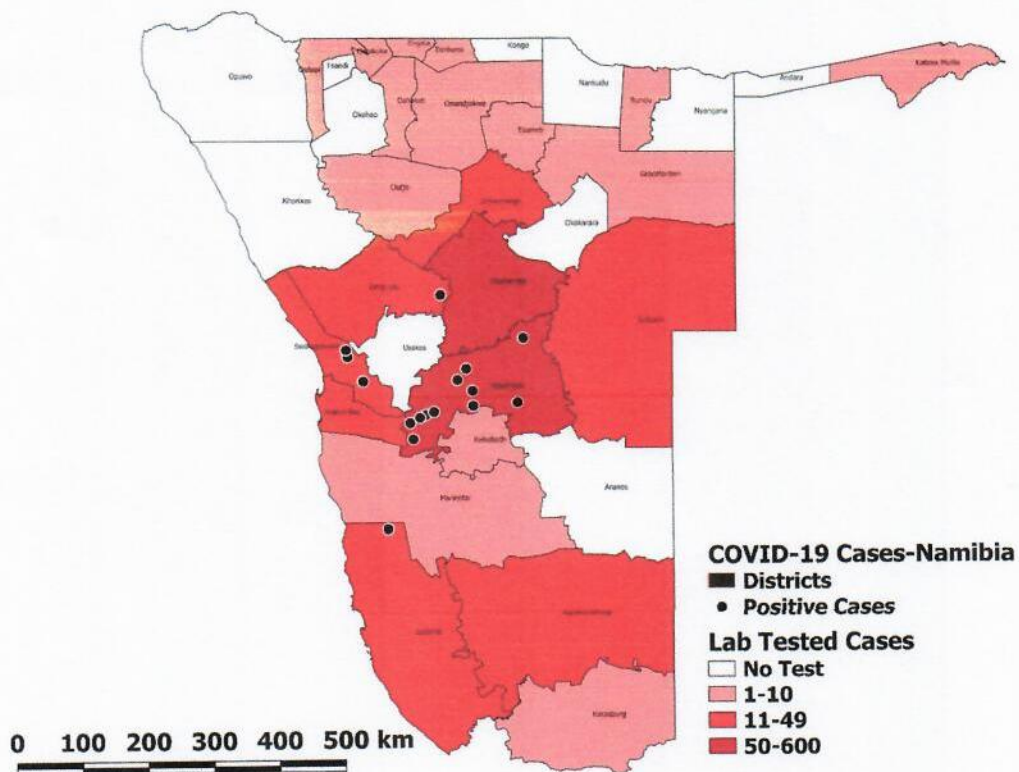


Figure 3: Suspected and confirmed COVID-19 cases in Namibia per District, 12 May 2020

3. PUBLIC HEALTH ACTION / RESPONSE INTERVENTIONS EPIDEMIOLOGY & SURVEILLANCE

- **Case definitions as of 20 March 2020:**

Suspect case:

A. A patient with acute respiratory illness (fever and at least one sign/symptom of respiratory disease, e.g., cough, shortness of breath), AND a history of travel to or residence in a location reporting community transmission of COVID-19 disease during the 14 days prior to symptom onset;

OR

B. A patient with any acute respiratory illness AND having been in contact with a confirmed or probable COVID-19 case in the last 14 days prior to symptom onset;

OR

C. A patient with severe acute respiratory illness (fever and at least one sign/symptom of respiratory disease, e.g., cough, shortness of breath; AND requiring hospitalization) AND in the absence of an alternative diagnosis that fully explains the clinical presentation.

Probable case: A suspect case for whom testing for COVID-19 is inconclusive. Inconclusive being the result of the test reported by the laboratory

Confirmed case: A person with laboratory confirmation of COVID-19 infection, irrespective of clinical signs and symptoms

Active surveillance working case definition as of 20 April 2020

A patient diagnosed with Upper/Lower Respiratory Infection (Mild or Severe) presenting any of the following signs and symptoms: cough, sore throat, fever, chills, myalgia/body pains or shortness of breath in the past 7 days.

- **Surveillance activities**

- Daily pillar and intra-pillar discussions are held to deliberate daily progress, gaps and way forward;
- Call centre continue operations for 24 hours every day.
- Erongo Covid-19 hotline number (0800460460) launched on 9 May 2020

- Data entry is ongoing and real-time data dashboard has been completed and ready to be launched soon.
- Active case search in all regions aimed at looking for possible community transmission is ongoing.
- Weekly ZOOM sessions with regional teams is on going last meeting held on 07.05.2020
- Contact tracing is ongoing (see table 2) .
- People under mandatory quarantine are being monitored daily (see table 3) and will be tested on day 12 before release on day 15 if they test negative.

Contact tracing Summary

Table 2: National contacts tracing summary for COVID-19 as of 12.05.2020

| Variables | High | Medium | Low | Total |
|--|------|--------|-----|-------|
| Total Number of contacts listed (potential) | 68 | 52 | 138 | 258 |
| Total number of Contacts never reached | 0 | 0 | 16 | 16 |
| Total Number of contacts identified | 68 | 52 | 122 | #242 |
| Total Number of contacts that developed signs & symptoms | 25 | 8 | 7 | 40 |
| *Total Number contacts without signs & symptoms TESTED | 20 | 5 | 27 | 52 |
| © Total Number of contacts lost to follow up | 0 | 2 | 5 | 7 |
| Total Number of contacts tested positive (became cases) | 3 | 1 | 0 | 4 |
| Number of active contacts monitored/followed in the last 24hrs | 2 | 0 | 0 | 2 |
| Total number of Contacts completed 14-days follow up | 64 | 49 | 116 | 229 |

**Number of contacts without signs & symptoms tested. One tested positive.*

© Seven contacts are lost to follow up, all are non-Namibians and have travelled back to their countries of origin.

Number includes all contacts (24) for the truck driver who was confirmed in Zambia 23 were tested and were all negative.

Table 3: Number of people in mandatory quarantine facilities as of 12.05.2020

| Region | Newly quarantined 24hrs | Cumulative number of people | Number of people discharged | Number of people in quarantine now |
|--------------|-------------------------|-----------------------------|-----------------------------|------------------------------------|
| Kunene | 0 | 26 | 0 | 26 |
| Omaheke | 0 | 38 | 18 | 20 |
| Kavango | 0 | 4 | 2 | 2 |
| Omusati | 2 | 61 | 8 | 53 |
| Oshana | 0 | 6 | 3 | 3 |
| Ohangwena | 0 | 131 | 54 | 77 |
| Hardap | 0 | 70 | 40 | 30 |
| Otjozondjupa | 1 | 215 | 100 | 115 |
| Khomas | 29 | 283 | 158 | 125 |
| Zambezi | 6 | 162 | 111 | 51 |
| //Karas | 4 | 157 | 96 | 61 |
| Erongo | 0 | 37 | 35 | 2 |
| Total | 42 | 1190 | 625 | 565 |

LABORATORY INVESTIGATIONS

- As of 12 May 2020, 1662 COVID-19 specimens were tested in the two laboratories (NIP and Path Care) as per table 4. below:

Table 4: COVID-19 specimens recorded at NIP and Path care Laboratories as of 12.05.2020

| | Laboratory | | | Total |
|---|-------------|------------|--------------|-------------|
| | NIP | Path care | South Africa | |
| Total sample received by the Laboratory | 1419 | 414 | - | 1833 |
| Total sample tested | 1256 | 406 | - | 1662 |
| Total sample re-tested | 105 | 1 | - | 106 |
| Total results positive | 9 | 6 | *1 | 16 |
| Total results negative | 1247 | 400 | - | 1647 |
| Total sample discarded | 58 | 7 | - | 65 |
| Total results pending | 0 | 0 | - | 0 |
| Total results inconclusive/indeterminate | 0 | 0 | - | 0 |
| @Total new suspected cases in last 24 hours | 90 | 75 | - | 165 |

*1 Patient specimen collected and tested in South Africa, he travelled back before results came out
 @ Total new suspected cases laboratory results received within past 24 hours

COORDINATION AND LEADERSHIP:

- Daily feedback meetings of pillar leads and Incident manager (IM) are ongoing, to share daily accomplishments and to address key challenges.
- Integrated online trainings started on 6 May 2020 and ongoing.
- Submitted final inputs on SOPs and indicators to pillars for finalisation and submission to management for endorsement.
- A plan/concept note for assessing current readiness and capacity gaps being drafted for strengthening covid-19 response in the regions

CASE MANAGEMENT

- Out of the 16 cumulative confirmed cases, 11 have recovered, and have been discharged after testing negative twice for COVID-19 at 48 hours' interval.
- The remaining 5 active cases are in stable condition and are all asymptomatic.

LOGISTICS:

- Facilitation of the allocation of quarantine facilities in the country and transportation for discharged people from quarantine facilities is ongoing.
- Provision of commodities' specifications and verification for procurement is being done regularly.
- Cumulative number of recruitments to date 1444 (790 Temporary staff & 654 Permanent staff)

POINTS OF ENTRY:

- A meeting was held with other stakeholders, after which the SOP for the management and monitoring of trucks and other cross border vehicle drivers was finalized.
 - The implementation of the SOP will be enhanced once the Transport Sector directives to combat the spread of COVID-19 has been gazetted.
- Conducted a training through integrated training via Zoom on COVID-19 response.
- Screening and inspection of incoming travellers and trucks at points of entry and check points are ongoing

RISK COMMUNICATION AND COMMUNITY ENGAGEMENT:

- The communication hub continues to give updates on COVID-19 and clarify miscommunications on a daily basis.
 - This is done concurrently with the social media updates.
- The Media continue to communicate messages on COVID-19 and the lifting of the lockdown to stage 2.
- The RCCE continues to share messages on COVID-19 prevention measures.

PSYCHOSOCIAL SUPPORT SERVICES:

- A total of 523 persons in need of shelter housed at two sites in Windhoek, while a total of 102 still on the street.
- Provision of health education, psychosocial support services, as well as food at places where persons in need of shelter are placed are ongoing.

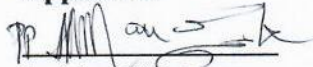
4. CHALLENGES

- Inadequate isolation units at health facilities in the regions.
- Unavailability of probes and primers for NIP laboratory to start testing for Seasonal Influenza (H1N1) from beginning May 2020.
- Delayed distribution of viral swabs to different regions

5. RECOMMENDATIONS AND WAY FORWARD

- Establish fully equipped isolation units at health facilities in the regions.
- NIP to fast track procurement process laboratory testing kits (swabs, probes and primers) for Seasonal Influenza (H1N1) testing.
- NIP to fast track the distribution of viral swabs to regions
- IPC and logistics pillar to continue maintaining the procurement and supplies of sufficient PPE to the regions to ensure response is not interrupted.

Approved:



Incident Manager

Date: 12.05.2020


Secretariat